

2024-2027



**FAMILY
RESOURCE
DIRECTORY**

Okaloosa and Walton Counties

-Healthy Mothers-Healthy Babies-Healthy Families-

TABLE OF CONTENTS

02 **Pregnancy Testing - Healthy Start Services**

03 **Emergency - Information Lines**

04 **T.E.A.M. DAD**

05 **Childcare - Special Needs**

06 **Clothing - Food - Transportation**

07 **Dept. of Children and Families- WIC- Legal Services**

08 **Family Assistance**

09 **Housing**

10 **Military Family Services**

11 **Child and Adult Education- Employment**

12 **Counseling - Support Groups - MAT**

13 **Parenting and Childbirth Education**

14 **Prenatal Care Physicians - OB/GYN - Hospitals**

15 **Pediatricians - Family Care Physicians**

16 **CONNECT- To Home Visiting Services**

17 **Social Determinants of Health**

18 **Maternal Mental Health Hotline**

FOR A PREGNANCY TEST, CONTACT:

Okaloosa County Health Department (FWB)	850-833-9246
Okaloosa County Healthy Department (Crestview)	850-689-7808
Walton County Health Department	850-892-8015
Fort Walton Beach Center for Women	850-862-9020
Crestview Pregnancy Center	850-682-1011
Pregnancy Support Center DeFuniak Springs	850-892-7400
Catholic Charities of Northwest Florida	850-244-2825
Eglin Hospital Information/Patient Advocate*	850-883-9042
Eglin Hospital Appointments*	850-883-8600
Hurlburt Hospital Info/Appointments*	850-881-1020

***Services at Eglin and Hurlburt require a Military ID Card**

Early Prenatal Care Matters

Prenatal care is when you get check-ups from your health care provider during your pregnancy. It is an important part of your health and your future baby's health. You should get prenatal care as soon as you know you are pregnant.

Prenatal care will:

- Improve the health of your pregnancy
- Reduce the fetus' and infant's risk for complications
- Provide accurate nutrition information
 - Track baby's development
 - Perform appropriate testing
- Help you learn about labor and delivery

CONGRATULATIONS ON BECOMING A MOTHER!

The choices you make now are important for your baby's health.

Healthy Start of Okaloosa-Walton is dedicated to supporting the quality of life for women before, during, and after their pregnancy.

OUR GOAL IS: HEALTHY BABIES BORN TO HEALTHY MOTHERS!

Say **YES** to the **Healthy Start Health Risk Screens** at your Doctor's Office and Labor and Delivery Hospital!



EMERGENCY? CALL 911

FL Abuse Hotline	1-800-926-2873
Access FL (Medicaid)	1-866-762-2237
Adoption Hotline	1-800-962-3678
AIDS	1-800-352-2437
Child Abuse Hotline	1-800-422-4453
Child Find, Inc.	1-800-426-5678
Children's Home Society	1-800-266-2700
Domestic Violence Hotline	1-800-799-7233
Family Health Line	1-800-451-2229
Financial Services	1-800-342-2762
First Call for Help	1-850-243-9111
Florida Kidcare Insurance	1-888-540-5437
Florida SIDS Alliance	1-800-743-7352
Job Discrimination	1-800-342-8170
Lakeview Center	1-866-517-7766
-LV Mobile Response Team	1-866-517-7766
Legal Services of N. Florida.....	850-862-3279



Northwest Florida



United Way
of West Florida

Maternal Mental Health Hotline	1-833-852-6262
Medicaid Information	1-800-303-2422
National Runaway Switchboard.	1-800-RUNAWAY
Oasis Florida.....	850-314-0950
Poison Control Nationwide	1-800-222-1222
Postpartum Support	1-800-944-4773
Shelter House	1-850-243-1201
STD Hotline	1-800-232-4636
Stuttering Foundation	1-800-992-9392
Substance Abuse Hotline	1-800-662-HELP
Suicide Prevention Hotline	1-800-273-8255
WIC Program Hotline	1-800-342-3556



Our Mission

T.E.A.M. Dad aims to increase the overall well-being of children by equipping fathers with the education and resources needed to become the best father they can be.

Employment Services

- Express Employment.....850-500-5627
- LandrumHR.....800-888-0472
- CareerSource.....850-833-7587

Legal Services

- Child Support Enforcement 800-622-5437
- Legal Services of N. Florida 850-862-3279
- Office of Public Defender
- Okaloosa 850-651-7350
- Walton 850-892-8090

Mental Health

- Bridgeway Center850-833-7500
- Lakeview Center.....850-469-3500
- Family Support Team850-892-8618
- 24 Hour on-call crisis counseling team
- Mental Health Association.....850-244-1040

Education

- Emerald Coast Technical College.....850-892-1241
- Northwest Florida State College.....850-678-5111
- Okaloosa Technical College.....850-833-3500

DID YOU KNOW?

Children who grow up with Involved Fathers experience better mental, emotional, educational, and social outcomes.

For more information visit
WWW.TEAMDADHSOW.ORG

CHILD CARE AND SERVICES

Healthcare for Kids.....850-689-1376

Pediatric Day Nursing (Medical Daycare) for medically fragile and medically complex patients and their families

Boys and Girls Club of the EC

-Corporate Office850-862-1616

-Fort Walton.....850-862-1332

-Destin850-833-3132

-DeFuniak 850-865-5294

-South Walton850-622-0602

Head Start

-Okaloosa850-651-0645

-Walton850-892-7635

Early childhood education programs for birth to age 5

Early Learning Coalition.850-833-3627

Supports families through school readiness and early education programs. Also offers financial assistance for eligible families

SPECIAL NEEDS

ARC of the Emerald Coast...850-863-1530

ARC of Walton County850-892-5013

Offers a variety of programs for children and adults

The Children's Center..... 850-244-9187

Children's Med. Services.....800-381-3685

Children under 21 with chronic conditions, whose physical functions are impaired as a result of accident, disease, or birth defect and whose families cannot afford treatment

Capstone Adaptive Learning and Therapy Centers, Inc......850-432-1596

Services for children and adults

Caring Hearts850-689-1376

Pediatric Day Nursing and Treatment Center for medically fragile and medically complex patients and their families

CHADD800-233-4050

Parents of Children with ADHD

Early Steps850-416-7656

Screening, evaluation, and referral for children up to three whose development is delayed

EC Children's Adv. Cent......850-833-9237

EC Autism Center.....850-279-3000

Hospice of the EC.....850-689-0300

Magnolia Pediatric Therapy

Fort Walton & Crestview.....850-226-8279

Destin850-424-5469

Pediatric speech, language, feeding and swallowing therapy, and social skills groups

Pediatric Therapy Center

Crestview850-682-8388

Speech/language, feeding, physical, occupational, and school-based therapy

Tree House Therapy850-226-7411

Supplemental Security Income (SSI)866-331-2194



Growing Green Families

HEALTH, WELLNESS & COMMUNITY

850-696-0363

A space dedicated to the health of families, creating community and connection through chiropractic, massage & functional medicine.

CLOTHING

- Catholic Charities** 850-244-2825
- Caring and Sharing**
- South Walton 850-267-2866
- DeFuniak Springs 850-892-7656
- FWB Cent. for Women**.....850-862-9020
- First Presbyterian**
- DeFuniak Springs 850-892-5832
- Goodwill**
- Fort Walton Beach850-864-6677
- Valparaiso 850-729-0131
- Crestview 850-689-2664
- Destin 850-837-8516
- Santa Rosa Beach850-267-0555

- Harvest House**
- Destin 850-837-2277
- Pregnancy Center**
- Crestview 850-682-1011
- DeFuniak Springs850-892-7400
- Sharing and Caring**
- Fort Walton Beach 850-244-0778
- Crestview 850-682-1907
- Niceville 850-678-8459
- Salvation Army** 850-243-4531
- The Matrix Outreach**850-892-1090
- Waterfront Mission Thrift Stores**
- Fort Walton Beach 850-244-2726
- Crestview 850-689-2700

FOOD



**For FREE food resources
available near you, call
(888) 705-3663
or visit
feedingthegulfcoast.org/find-help**

TRANSPORTATION

Okaloosa

Okaloosa Coordinated Transportation

*Rides must be scheduled by 1PM the day prior to requested travel

*Can schedule 7 days in advance

Call 850-833-9168 or visit ecrider.org

Walton

Tri-County Community Council

*Reservations must be made no later than noon the day before your appointment

Call 850-892-2422

CHILDREN AND FAMILY SERVICES

Unemployed, uninsured or low-income may be eligible for financial assistance or Medicaid

Florida System of Children and Family Services offers a one-stop eligibility screen for all available economic and medical services. Services include food stamps/EBT, Medicaid, Well Baby Care and **Temporary Assistance for Needy Families (TANF)**.

Department of Children and Families Access Florida Line 1-866-762-2237
Florida DCF Client Services for Northwest Region 850-778-4045
or visit <https://www.myflfamilies.com/services>

Nutrition for Women, Infants, and Children

WIC provides the following at no cost: healthy foods, nutrition education and counseling, breastfeeding support, and referrals for health care and community services.

Local WIC Offices:

- Fort Walton850-833-9254
- Crestview850-689-7858
- DeFuniak Springs.....850-892-8020

FAMILY PLANNING

- Okaloosa County Health Department
- Fort Walton Beach850-833-9240
- Crestview850-689-7808
- Walton County Health Department
- Defuniak Springs.....850-892-8015



LEGAL SERVICES

- Child Support Enforcement** 800-622-5437
- Department of Juvenile Justice**
- Fort Walton Beach 850-833-3906
- Crestview 850-689-7901
- Florida Hwy Patrol, Troop A, Victim Advocate**850-873-7020
- Guardian Ad Litem- Child Advocate** 850-892-8676
- Southern Star Immigration Attorney**.....855-692-4649
- Legal Services of N. Florida** 850-862-3279
- Office of Public Defender**
- Okaloosa 850-651-7350
- Walton850-892-8090

FAMILY ASSISTANCE

**ALWAYS
LOOK
BEFORE YOU
LOCK**

**EVEN IF YOU
DON'T THINK IT
CAN HAPPEN TO
YOU, IT CAN!**

Every year countless children die after being left behind in a hot car!

Cars interior temperature can rise 20 degrees in just 10 minutes, and a child's small body heats up 3-5 times faster than an average adult

90WORKS	855-90WORKS
ARC of The Emerald Coast	850-863-1530
Alcoholics Anonymous	850-244-2421
American Cancer Society	850-244-3813
American Diabetes Assoc	800-342-2383
American Lung Assoc	800-LUNGUSA
American Red Cross	850-432-7601
Big Brothers & Big Sisters	850-664-5437
Catholic Charities of NWFL ...	850-244-2825
Children's Home Society	850-833-3872
Early Learning Coalition	850-833-3627
Elder Services of Okaloosa	850-833-9165
EC Children's Advocacy	850-833-9237
Epilepsy Foundation of FL	850-433-1395
Blind Services	850-245-0370
Fresh Start	850-243-5648
Healthy Families	850-983-5486
Heart of the Bride.....	850-678-9008
HOPE Florida	850-300-HOPE
Hope House	850-682-2374
Lutheran Services	850-664-0145
Mental Health Association....	850-244-1040
Okaloosa AIDS Support	850-314-0950
Pathway Substance Abuse ...	850-609-1004
Ronald McDonald House	850-477-2273
Youth Challenge Academy.....	904-682-4031
Tri-County Programs	850-892-2422
UF/IFAS Extension	
-Okaloosa	850-689-5850
-Walton	850-892-8172

Information on farming, lawn care, bugs, money management, 4-H, health, nutrition, car seat safety, and more

Need help applying for health insurance?

Health Insurance Navigators
850-224-1177
bigbendahec.org

Medicaid and Florida Care Assisters
1-800-436-6001
floridaconnectingkidstocoverage.com

LOW INCOME HOUSING

Housing Authority

- Fort Walton 850-243-3224
- Niceville 850-678-7816
- Crestview 850-682-2413
- DeFuniak 850-892-2823

Section 8 - HUD

- Fort Walton 850-243-3224
- Crestview 850-682-2413
- DeFuniak 850-892-8185

HOUSING ASSISTANCE AND SHELTER

- CALM House** 850-279-6419
- Fresh Start** 850-243-5648
- Freedom Life Comp.** 850-420-8280
- Habitat 4 Humanity**
- Okaloosa 850-315-0025
- Walton 850-660-1681
- Hope House** 850-682-2374
- Opportunity Place** 850-659-3190
- Sharing and Caring**
- Fort Walton 850-244-0778
- Crestview 850-682-1907
- Niceville 850-678-8459
- Caring and Sharing**
- DeFuniak 850-892-7656
- S. Walton 850-267-2866
- Shelter House**
- Fort Walton 850-863-4777
- Crestview 850-683-0845
- Walton 850-392-7190
- The Matrix Outreach** 850-892-1090
- Tri-County Council** 850-892-3615

LOW INCOME APARTMENTS

Okaloosa

Fort Walton Beach

- Charlie Hill Terrace** 850-243-3224
- Sound Side Apts** 850-586-1899
- Church Street Apts** 850-243-3224

Crestview

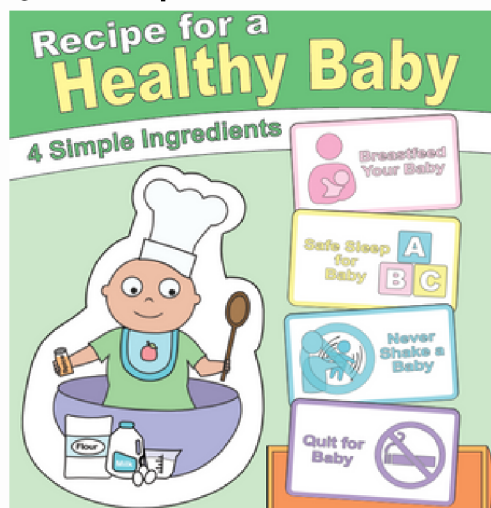
- Brookmead Villas Apts.** 850-689-2272
- Bent Creek Apts** 850-682-5563
- Brentwood Apts** 850-682-9422

Niceville

- Nicewood Garden** 850-897-4272
- Wildwood Apts** 850-678-7734

Walton

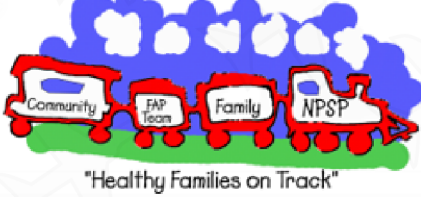
- Hazelwood Apts** 850-835-4483
- Heritage Apts** 850-892-5232
- Oakdale Apts** 850-892-7734
- Quail Run Apts** 850-892-2823



A nonprofit 501c3 organization providing beds for children who would otherwise be sleeping on the floor or in inadequate spaces.

Call 850-280-5519 or Visit abed4me.org

New Parent Support Program



"Healthy Families on Track"

A Safe Sleep Environment is as Easy as ABC



DUKE FIELD

Readiness Center 850-883-6471

Offers services to enhance readiness and quality of life for Airmen and their families

Chaplain 850-883-6922

Fitness Center 850-883-1487

Force Sup. Squadron..850-883-6203

Legal Services850-883-6902

Personnel Sup. 850-883-6458

Additional helping agencies on Hurlburt:

<http://www.hurlburt.af.mil/>

EGLIN AIR FORCE BASE

Hospital 850-883-9042

Airman&Family Readiness850-882-9060

Offers services to enhance readiness and quality of life for Airmen and their families

Exceptional Family Member...850-883-4342

For families with special needs- assists with identifying and accessing programs and services

Family Advocacy Program.....850-883-8616

For prevention and intervention of family maltreatment

Lactation Consultants850-883-8001

New Parent Support 850-883-9890

Provides counseling, education and support for new parents or parents with children up to 3 years of age

Child Development Center850-883-7425

Family Child Care 850-882-2994

Youth Center 850-882-8212

School Age Program 850-882-8291

Health Promotion 850-883-8020

HURLBURT FIELD

Medical Service 850-881-1020

Airman and Family Readiness..850-884-5441

Offers services to enhance readiness and quality of life for Airmen and their families.

Exceptional Family Member ... 850-884-6830

For families with special needs - assists with identifying and accessing programs and services

Family Advocacy Program 850-881-5061

For prevention and intervention of family maltreatment

New Parent Support 850-881-5256

Provides counseling, education and support for new parents or parents with children up to 3 years of age

Child Development Center 850-884-6664

Family Child Care 850-884-4300

Youth Cent.&School Age Prog. 850-884-6355

Health and Wellness Cent. 850-884-4292

Additional helping agencies on Eglin:

<https://www.eglin.af.mil/Units/Base-Helping-Units/>

EDUCATION

County School Districts	
-Okaloosa	850-833-3100
-Walton	850-892-1100
CHOICE High School	850-833-3500
Early Head Start	850-951-0464
Early Learning Coalition.....	850-833-3627
Head Start	
-Chautauqua Center	850-892-6144
-Chester Pruitt	850-244-2606
-Crestview Edney Cntr	850-682-2912
-Crestview Baystreet Cntr.....	850-651-0645
-Fort Walton Beach	850-244-2606
Lakeview Center	850-682-5931
-Laurel Hill	850-652-4909
-Kennedy Center	850-682-1992
-McGriff Center	850-974-8274
-Niceville Center	850-543-6960
-Walton Center	850-892-7635
Rocky Bayou	
Christian School	850-729-7227
Seaside School	850-231-0396
Walton Academy	850-892-3999

ADULT EDUCATION

GED	850-729-5387
CHOICE Inst.	850-833-3500
Emerald Coast Tech.....	850-892-1240
NWF State College	850-678-5111
-Chautauqua/DFS	850-200-4100
-Fort Walton Beach	850-863-6534
-Crestview	850-200-4141
-South Walton	850-200-4160
NWFSC Career Cent	850-729-5227
Troy State University	850-301-2100
University of West FL	850-863-6565
Eng. for Speakers of Other Languages	
-Niceville	850-729-5387
-Chautauqua	850-892-8100
-Fort Walton Beach	850-863-6534
-Crestview	850-689-7911
-South Walton	850-367-2888

Did you Know?

Reading to your baby supports emotional and emotional development.

WATER SAFETY FLAG WARNING SYSTEM



Water closed
Water activity is prohibited



High hazard
Knee deep is too deep



Moderate surf/currents



Calm conditions



Dangerous marine life

Absence of flags does not assure safe waters.
Swim at your own risk.

EMPLOYMENT

AmeriCorps - NWFSC	850-729-6037
CareerSource	
-Okaloosa	850-833-7587
-Walton	850-520-5990
Employee FL Mkt Place.....	866-352-2345
Labor Finders	850-243-2699
Social Security Admin.....	800-772-1213
Vocational Rehab.....	850-833-9114

Looking to get your
GED? visit GED.com
for classes online and
near you!

COUNSELING

Mental Health and Crisis Response

Bridgeway Center	850-833-7500
Beachside Counseling	850-833-3870
Catholic Charities of NW Florida	850-244-2825
Children's Home Society	850-266-2700
Chautauqua Healthcare Services	850-892-8045
Jo Ann Birge Women&Children's Cent...	850-892-8030
CDAC Behavioral Health.....	850-434-2724
E.C. Children's Advocacy	850-833-9237
Family Support Team	850-892-8618
<i>24 Hour on-call crisis counseling team</i>	
Journey Pure	844-849-7957
Lakeview Center	850-469-3500
-Mobile Response Team	866-517-7766
Hope House (Lutheran Services)	850-682-2374
Mental Health Association	850-244-1040
Pregnancy Support Center DFS	850-892-7400
Pathway/Lakeview Center	850-609-1040
Turning Point Center	850-243-8086
<i>For Psychological/Family Growth</i>	

SUPPORT GROUPS

Alcoholics Anonymous	850-244-2421
Shelter House	850-243-1201
The Compassionate Friends	850-865-7918
<i>Supporting Family After a Child Dies</i>	
OASIS (AIDS)	850-314-0950
Postpartum Depression	800-773-6667
PPD Leaps, Niceville	850-418-4990
Teenage Parent Program	850-833- 3500
Quit Tobacco	850-398-6965

MEDICATION-ASSISTED TREATMENT (MAT) RESOURCES

Bridgeway Center.....	850-812-3334
Lakeview Center	
-Pensacola Clinic.....	850-468-3500
-Shalimar Clinic.....	850-437-8900
-Summit Group.....	850-437-8952
-Pensacola Metro Treatment Center.....	850-968-3565

SMOKING AND VAPING DURING PREGNANCY



Quitting smoking can be difficult, but it can help protect you and your baby's future greatly. It's never too late to quit. For **FREE** support now, call **1-800-QUIT-NOW (1-800-784-8669)** or visit **healthystartokawalton.org** for support and a schedule of smoking cessation classes.

1 in 8 women

report symptoms of depression during pregnancy or after giving birth.

You are not alone. Maternal mental health concerns can be treated.



Moms can experience changes in their mental health such as anxiety, depression, feelings of being overwhelmed, and a loss of interest in things they once enjoyed, during or after pregnancy.

If you are experiencing these symptoms, you are not alone. Connect with a health care provider in your area by visiting FLBHimpact.org.

Florida
HEALTH



Florida
BH IMPACT

This publication was produced by the U.S. Department of Health and Human Services, Health Resources and Services Administration, Maternal and Child Health Bureau under grant number UK3MC32242. This publication lists non-federal resources in order to provide additional information to consumers. The views and content in these resources have not been formally approved by the U.S. Department of Health and Human Services (HHS) or the Health Resources and Services Administration (HRSA). Listing these resources is not an endorsement by HHS or HRSA.



PARENTING/CHILDBIRTH EDUCATION

Beyond Just Buckled—Car Seat Safety850-218-8200
Crestview Pregnancy Center 850-682-1011
Catholic Charities of NWFL850-502-2870
Family Birth Center-Sacred Heart EC850-278-3995
Fort Walton Beach Medical Center850-862-1111
Healthy Families850-983-5486
-Escambia, Santa Rosa, Okaloosa, Walton	
Healthy Start 850-833-9284
-Okaloosa, Walton	
North Okaloosa Medical Center 850-689-8475
Postpartum Depression 800-773-6667
Pregnancy Support Center DFS 850-892-7400
Teenage Parent Program 850-833-3500
UF/IFAS Extension - Car Seat Safety 850-689-5850

ADOPTIONS/FOSTER CARE RESOURCES

Catholic Charities of NWFL 850-244-2825
Children's Home Society 850-266-2700
Families First Network	
-Fort Walton Beach 850-833-3905
-Crestview 850-689-7782
-DeFuniak Springs 850-892-8647
The Pearl Project 352-405-5950

BREASTFEEDING SUPPORT

Christina Schaefer Lactation 850-259-1105
Growing Green Families 850-696-0363
La Leche League -Int 800-LALECHE
-Panhandle/Niceville 850-259-1105

LOCAL WIC OFFICES:

Fort Walton Beach 850-833-9254
Crestview 850-689-7858
DeFuniak Springs 850-892-8020

HOSPITALS

HCA Florida Fort Walton-Destin Hospital	850-862-1111
North Okaloosa Medical Center.....	850-689-8100
Twin Cities Hospital	850-678-4131
Ascension Sacred Heart Emerald Coast	850-278-3000
Ascension Sacred Heart Hospital, Pensacola	850-416-7000
Eglin Regional Hospital	850-883-9042
Healthmark Regional Medical Center	850-951-4500

OB/GYN CARE

OKALOOSA COUNTY

Donald Whitaker, MD

Fort Walton Beach850-863-1000

Diana Health Obstetrics & Gynecology

Fort Walton Beach850-243-2229

Eglin Air Force Base - Military Care

OB/GYN Clinic850-883-9238

FMRC.....850-883-8600

North Okaloosa Physician Group

Crestview850-689-2229

Sacred Heart Medical Group

Niceville850-897-0110

Sergio Cabrera, MD

Crestview850-398-8940

WALTON COUNTY

Sacred Heart Medical Group

Miramar Beach 850-267-2961

Inlet Beach.....850-278-3466

WOMEN CARE PHYSICIANS (GYN)

Glenn M. Bankert, DO

Crestview850-689-2223

Lisa Judge, MD

Niceville 850-729-1414

Ann Nguyen, MD

Fort Walton Beach850-837-0576



CONNECT is here to help you connect with services in the community that benefits you and your family. Pregnant women, families, and caregivers with young children are welcome!

Services include...

- Pregnancy Education and Support
- Childbirth Education
- Breastfeeding Education and Support
- Help to Quit Smoking
- Counseling Services
- Infant Safety

PREGNANCY SUPPORT

Crestview Pregnancy Center

Crestview.....850-682-1011

FWB Center for Women

Fort Walton Beach.....850-862-9020

Pregnancy Support Center

Defuniak Springs..... 850-892-7400

Before a child enters your world



Remove tobacco from your life.



1-877-U-CAN-NOW
tobaccofreeflorida.com

It's never too early to quit

FAMILY CARE PHYS.

OKALOOSA COUNTY

- Charles Barniv, MD
 -Destin.....850-837-5181
 Bridgeway Health Clinics
 -Fort Walton.....850-226-8857
 Crestview Health Center 850-682-1164
 Gateway Clinic
 -Baker 850-537-9312
 -Crestview850-423-0061
 Lisa Clark, MD
 -Destin 850-269-0111
 Magnolia Medical Clinic
 Fort Walton Beach850-243-7681
 Pat Tidwell, MD
 -Niceville 850-678-6735
 Marcene Kreifels, MD
 -Crestview.....850-682-1735
 White Wilson Medical Center
 -Fort Walton Beach 850-863-6600
 -Niceville850-897-4400
 -Crestview.....850-398-8725
 Sacred Heart Medical Group
 -Crestview850-682-6122
 -Destin850-837-0032
 St. George Medical Center
 -Fort Walton..... 850-862-3415

WALTON COUNTY

- Doctors Medical Center
 -DeFuniak850-892-2888
 Clark Family Medicine
 -Miramar Beach.....850-269-0111
 Garcia Medical Clinic
 -DeFuniak.....850-892-4791
 Sacred Heart Medical Group
 -Miramar Beach.....850-622-3393
 Perry D. Hight, MD
 -Miramar.....850-502-7987
 Ruben Garcia, MD
 -DeFuniak.....850-892-4791
 White Wilson Medical Center
 -DeFuniak 850-863-6600
 Pancare
 -Freeport.....850-880-6568
 Walton County DOH.....850-892-8015

**VACCINES
STRENGTHEN
YOUR BABY'S
IMMUNE
SYSTEM**

Babies are born with immune systems that can fight most germs, but there are some deadly diseases babies can't handle.

IMMUNIZATION = POWER TO PROTECT
www.cdc.gov/vaccines

Florida HEALTH
 Okaloosa County

PEDIATRICIANS

- ABC Pediatrics
 -Crestview850-689-0900
 -Niceville850-729-3575
 Beachside Pediatrics Associates
 -Niceville..... 850-424-6208
 Coastal Pediatrics
 -Santa Rosa Beach..... 852-659-6556
 Lynn Keefe, MD Pediatrics;
 -Niceville850-279-6260
 North Okaloosa Physician Group;
 -Crestview 850-398-8725
 Tracey Burton, MD
 -Niceville.....850-678-9009
 Sacred Heart Medical Group Pediatrics
 -Crestview850-683-5100
 -Freeport850-278-3400
 -Miramar Beach850-278-3885
 -Santa Rosa Beach850-278-3920
 White-Wilson Medical Center
 -Fort Walton Beach850-863-8203
 -Niceville850-729-4641
 -Destin850-269-6400
 Pediatric Primary Care Services
 -Walton County DOH850-892-8015



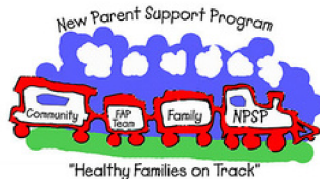


Connect helps pregnant women, caregivers, and families with young children by providing a single-entry point for needed services such as education and support in childbirth, newborn care, parenting, child development, food and nutrition, mental health, and financial self-sufficiency.

CALL US

(850) 833 - 3999

Home Visiting Programs in Okaloosa and Walton Counties



CONNECT- TO HOME VISITING SERVICES

16

What are social determinants of health?



Social determinants of health (SDOH) are the conditions in the environments where people are born, live, learn, work, play, worship, and age that affect a wide range of health, functioning, and quality-of-life outcomes and risks.

In this Community Resource Directory, you will find Resources that address Social Determinants of Health. If you or someone you know needs immediate assistance, please call 911.



Northwest Florida



United Way
of West Florida

Okaloosa County Sheriff's Office

850-651-7410

Walton County Sheriff's Office

850-892-8111

Not Feeling Like Yourself?

Let's Talk About It.



**Always
Free — 24/7**



**Support &
Resources**



**Confidential
Call & Text**

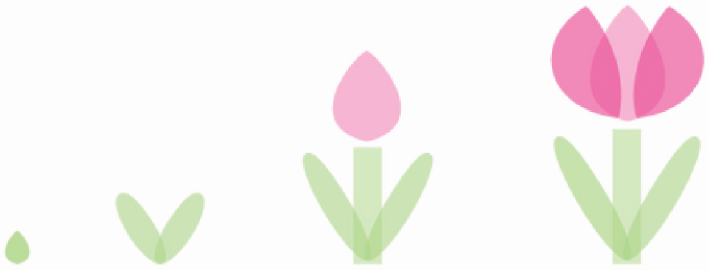


**60+
Languages**



**Don't wait. Reach out today.
1-833-TLC-MAMA (1-833-852-6262)**

NMMHH-001



Healthy Start

Okaloosa-Walton

www.healthystartokawalton.org

(850)833-9284

Follow and keep up with us!



Sponsored by HEALTHY START MOMCARE NETWORK, INC. and the State of Florida, Agency for Health Care Administration

